



## Weekly Bulletin – August 15, 2024



### WHAT'S NEW THIS WEEK?

#### Registration is NOW OPEN for our 29<sup>th</sup> Annual “Best of the Best” – December 10

The Florida Alliance Annual “Best of the Best” event showcases high-value healthcare programs initiated by employers. As always, we invite leading-edge employers from across the US who have been innovative in their benefit design and contracting to present their successful programs. **All Florida Alliance Employer Members receive complimentary registration!**



*David Hines*

This week’s featured “Best of the Best” speaker is **David Hines, the Executive Director of Benefits at Metro-Nashville Public Schools** – back by popular demand! David will speak about his work in diabetes. Diabetes management has presented a concern for employers over many decades due to the persistently high rates of prevalence combined with the negative health impacts and high healthcare costs associated with the condition. During David’s session, **“Leveraging the Impact of Innovative Technology in Diabetes Management,”** David will share the experience of Metro Nashville Public Schools (MNPS) in helping employees and dependents with diabetes to address a critical challenge—managing their blood glucose levels more effectively—

leading to better health outcomes while controlling overall healthcare costs. He will describe the multi-layered approach to diabetes prevention and management that MNPS has built over the past 15 years, with an emphasis on their support for technology that has proven effective in helping employees manage their blood glucose levels. He will also explain the decision factors, implementation steps and outcomes, including clinical data and financials that demonstrate the value of their strategy.

Detailed agenda forthcoming!

- **Date:** Tuesday, December 10, 2024
- **Time:** 9:00AM – 4:00PM ET
- **Location:** GuideWell Innovation Center, 6555 Sanger Road, Orlando, FL 32827
- **Employer Promo code:** EMPLOYER1224
- Register [HERE](#).

Thank you to **Healthcare Advisory Council member Florida Blue** for hosting this event again.



If you have any questions, or need assistance with your registration, please contact Lisa Hain at [lisa@flhealthvalue.org](mailto:lisa@flhealthvalue.org).

### Pharmacy Benefit Management Institute Annual Conference – September 4-6

This year’s Pharmacy Benefit Management Institute (PBMI) Annual National Conference is being held at the Caribe Royale Orlando on September 4-6. This event features industry leaders and subject matter experts as they discuss timely topics in pharmacy benefit management. The event provides attendees with the opportunity to learn, engage, and network with key stakeholders.

Speakers participating in the program include **Florida Alliance President and CEO Karen van Caulil, Miami-Dade County Public Schools Administrative Benefits Director and Florida Alliance Board Chair Rosa Novo, and Kenneth Aldridge, Jr., Director of Health Services at Rosen Medical Center and RosenCare, and Florida Alliance Board Member.** Their session will be on strategies and challenges with pharmacy benefit management.



For more information about this event, click [HERE](#). If you have questions, please reach out to Karen van Caulil at [karen@flhealthvalue.org](mailto:karen@flhealthvalue.org)

### National Alliance Annual Forum Registration – November 18-20

The National Alliance’s recent survey of employers from across the country found that organizations are committed to staying the course of accelerating their health benefit strategies despite the rising cost of health care. Join employer and industry leaders on November 18-20 in Washington, DC to discuss leading strategies and practical insights to drive scalable innovation and improvements in health and value. To learn more about the forum, click [HERE](#).



We are proud to announce that **Karen van Caulil, Florida Alliance President and CEO** will be moderating a session on price transparency. Also speaking at the Forum will be **Stephanie Koch, Director of Human Resources at Hendry Marine and Florida Alliance Board Vice Chair.**

As members of the National Alliance, **we have received complimentary registrations for 10 of our members.** Please see instructions below on how you can register with your complimentary code. Please let Lisa Hain know at [lisa@flhealthvalue.org](mailto:lisa@flhealthvalue.org) if you are registering so that we can keep track of our allotment of free registrations.

1. Click on the following registration link:  
<https://nationalalliancehealth.swoogo.com/2024annualforum/begin>
2. Under the discount code, enter: **PURCHASERPASS24** (click apply)
3. Under registration type, choose: **EMPLOYER MEMBER OF A COALITION**
4. Enter all personal information
5. Confirm registration

To take advantage of [hotel discounts](#) please register before October 18.

If there are any questions regarding the content of the event, please contact Karen van Caulil at [karen@flhealthvalue.org](mailto:karen@flhealthvalue.org) and for questions about registration, please email Brielle Jackson at [brjackson@nationalalliancehealth.org](mailto:brjackson@nationalalliancehealth.org)



## **EMPLOYER MEMBER EDUCATIONAL PROGRAMS, REPORTS, RESOURCES, AND EMPLOYER LEARNING COLLABORATIVES (ELC)**

---

### **Employer Member Benefit: Webinar – *Reclaiming Your Power: How to Access Your Claims Data and Hold Carriers Accountable* – September 12, 1:00PM – 2:30PM ET**

This webinar is a joint Florida Alliance/Midwest Business Group on Health event. During the webinar, you will learn how to protect your fiduciary responsibilities:

- Ways to access your own de-identified claims data
- How variations in contract language can change the game
- Practical steps to hold carriers, TPAs, and providers accountable

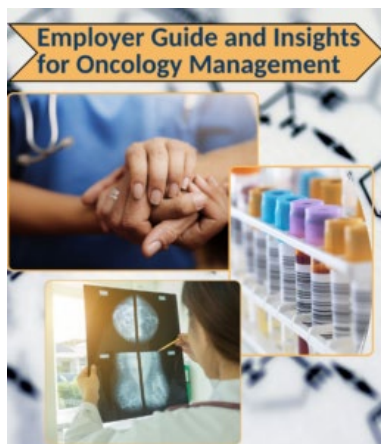


**Karen van Caulil, Florida Alliance President and CEO**, has been asked to present a Florida Alliance white paper on transparency which will be shared with you in advance of the webinar via an upcoming Weekly Bulletin. Also speaking are Alex Jung, who has presented to us on numerous occasions, and Julia Posacki from Affiliate Member SmartLight Analytics.

Additional details and registration can be accessed via the calendar invitation you should have received, or you can click [HERE](#). **PLEASE NOTE, to attend this event you must register!**

For more information, contact Karen van Caulil at [karen@flhealthvalue.org](mailto:karen@flhealthvalue.org)

## Another Resource Added to our *Employer Guide and Insights for Oncology Management*



Affiliate Member Merck has provided us with a new resource for our *Employer Guide and Insights for Oncology Management*, an [HPV Adolescent Fact Sheet](#). As we learned during the process of developing the guide, HPV is the cause of many serious cancers which can be prevented by HPV vaccination.

Click [HERE](#) to view our Employer Guide for more information and resources.

Please contact Karen van Caulil at [karen@flhealthvalue.org](mailto:karen@flhealthvalue.org) with any questions about this new resource or the Employer Guide and please let her know if you have found the Employer Guide to be helpful.



## IN CASE YOU MISSED IT

### **An Efficient Approach to Expand Equitable Access to Anti-Obesity Medication** (editorial in *American Journal of Managed Care*)

A new editorial discusses the promise of new anti-obesity medications (AOMs) like GLP-1 receptor agonists, which offer substantial weight loss and secondary health benefits, but face challenges such as adverse effects, high costs, and coverage restrictions.

**Authors argue that efficient allocation and equitable access to AOMs are crucial and propose a strategy focusing on maximizing health benefits per dollar spent, particularly by differentiating between active weight loss and maintenance phases.**



Read the full editorial [HERE](#). If you have any questions, please contact Karen van Caulil at [karen@flhealthvalue.org](mailto:karen@flhealthvalue.org)



## HEALTH OBSERVANCES

---

### October Health and Cultural Observances

#### National Depression Education & Awareness Month

National Depression Education & Awareness Month helps teach us about the signs, symptoms, and treatment options for depression. It also lets all of us know that seeking help – either from a counselor, a trusted friend, or your community – is a sign of hope and strength.

Did you know:

- [9.5%](#) of adults aged 18 and above struggle with regular feelings of depression
- Over [15 million](#) physician office visits each year are attributed to depressive disorders as the primary diagnosis



[World Mental Health Day](#)

*(October 10, 2024)*

[National Depression Screening Day](#)

*(October 10, 2024)*

Read more [HERE](#).

See below for resources employers can use to ask the right questions when selecting vendors for mental health:

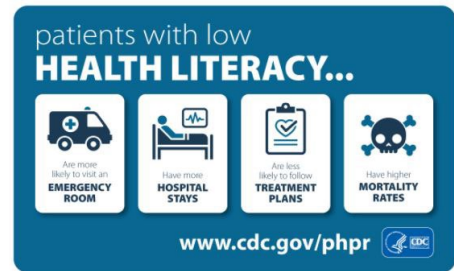
- [Mental health benefits: Overcoming hurdles to provide employees with better access to care](#)
- [Behavioral Health Vendor Engagement Template](#)

#### Improving Health Literacy Improves Health and Saves Lives

Everyone deserves to be able to understand and use health information, terms, and services wisely, so they are equipped to manage their health well. During [Health Literacy Month](#), **employers are urged to move health literacy *awareness* to health literacy *action***. Creating a plan, consulting available resources, and collaborating with schools, healthcare providers, and other community resources is a great place to start.

How to support health literacy at work:

- Explore the tools available at [healthliteracymonth.org](http://healthliteracymonth.org). Assets like social media graphics and a Health Literacy Month Toolkit are available
- Download the “[Back to Basics](#)” resources to promote the importance of prevention, early detection, and health improvement
- Build a supportive health literate organization through [CDC resources](#)



### Disability Employment Awareness Month: Celebrating Contributions and Achievements

[National Disability Employment Awareness Month](#) (NDEAM) recognizes the accomplishments of the steadfast workers with disabilities and reaffirms commitment to ensure equal opportunity for all.

This year marks 76 years since National Disability Employment Awareness Month was first celebrated. **Individuals and organizations are encouraged to participate in spreading awareness and joining in any form of outreach to encourage and educate the public.**



To see a video announcing the NDEAM theme for 2024, click [HERE](#).

### Breast Cancer Awareness Month Promotes Screening, Prevention, Research, and Understanding

[Breast Cancer Awareness Month](#) aims to promote screening and prevention of the disease, which affects one in eight women in the US every year and 2.3 million worldwide. **Learn more about breast cancer and how it affects peoples’ lives from podcasts, videos, and medically reviewed educational content on [Breastcancer.org](http://Breastcancer.org).**

Fast Facts:

- Breast cancer is the most diagnosed cancer among American women
- About 30% of early-stage breast cancers eventually metastasize (spread to parts of the body away from the breast)
- About 85% of breast cancers occur in women with no known history of the disease



**October 13** is Metastatic Breast Cancer Awareness Day

**October 17-23** is Men's Breast Cancer Awareness Week.

View the National Alliance [“Achieving Value in Cancer Care”](#) resources in which the Florida Alliance was an active contributor as well as our [Employer Guide and Insights for Oncology Management](#).

Health and cultural observances for November and December will be posted in the Weekly Bulletin over the next couple of weeks. **If you would like the information for November and December earlier in order to meet any lead times you may have for sending information out to your plan members**, please contact Lisa Hain at [lisa@flhealthvalue.org](mailto:lisa@flhealthvalue.org).



## MEMBERSHIP UPDATE

---

Thank you to the **City of Orlando** and **Orange County Government** for renewing your Employer membership!



We thank **AdventHealth** and **Orlando Health** for renewing their Healthcare Advisory Council membership, and we welcome back **UnitedHealthcare**!



**AbbVie and Merck** have renewed their Affiliate membership!



Welcome back to Affiliate Member, **US-Rx Care**!

[US-Rx Care](#) is a clinical pharmacy organization providing fiduciary pharmacy risk management services to self-insured employers, union trust funds, and health plans of all sizes and encompassing over 5 million insured individuals. They grew up in the at-risk health plan environment, working for and consulting to multiple Medicare, Medicaid, and commercial health insurers for over thirty years. At US-Rx Care, clients have access to proven pharmacy risk management programs and solutions that have consistently delivered reductions in pharmacy benefit spend by 30%-50% or more for at-risk health plan sponsors. They have also assisted multiple plans to achieve dramatic increases in HEDIS/Starts quality scores to achieve a 5-star rating under Medicare.



Contact Mark Mincy, Executive Vice President at [mmincy@us-rxcare.com](mailto:mmincy@us-rxcare.com) for more information.