

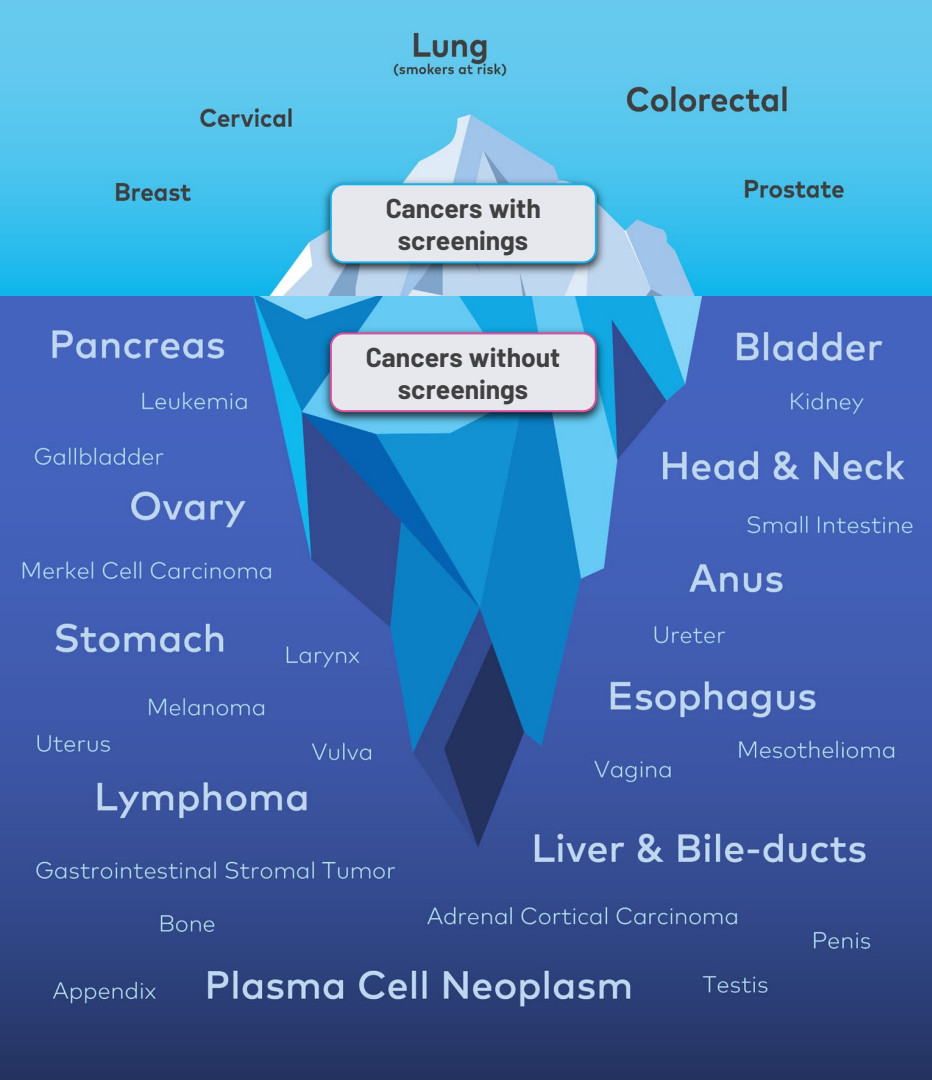


# A Breakthrough for Cancer Screening & Overall Employee Health

The Galleri<sup>®</sup> multi-cancer early detection (MCED) test

Jared E. Pierce – Director of Sales, Employer Partnerships – SE





**Employees face a health challenge: There are no recommended screenings for ~70% of cancers**

Incident cancers with USPSTF recommended screening. SEER Stat Database: Incidence - SEER 18 Regs Research Data, Nov 2017 Sub. Includes persons aged 50+ diagnosed 2006-2015.

# Cancer has more than just a physical effect – it also hurts each key area of employee health

## Physical Health

~70%

of cancer deaths are from cancers employees are not being screened for.\*<sup>1</sup>

## Mental Health

#1

Cancer is the #1 ranked medical fear for Americans.<sup>2</sup>

## Financial Health

~3X

Late stage cancer can cost ~3x more than early stage cancer, hurting both employees and employers.<sup>3</sup>

## Health Equity

Data clearly shows that **cancer makes existing racial/ethnic, geographic, and socioeconomic disparities even worse.**<sup>4</sup>

\*Among 50-79 years old. Assumes screening is available for all prostate, breast, cervical, and colorectal cancer cases and 43% of lung cancer cases (based on estimated proportion of lung cancers that occur in screen-eligible individuals older than 40 years).

# The Galleri<sup>®</sup> multi-cancer early detection test

**Now you can screen for a signal shared by 50+ cancers, with a simple blood draw.<sup>1</sup>**

**The Galleri test is also the #1 employee-ranked health benefit.<sup>2\*</sup>**

*Recommended for use in adults with an elevated risk for cancer, such as those aged 50 or older*

The Galleri test does not detect a signal for all cancers and not all cancers can be detected in the blood. False positive and false negative results do occur. The Galleri test looks for a signal associated with active cancer and does not predict future genetic risk for cancer. Galleri should be used in addition to healthcare provider recommended screening tests.

\*Market research included 1,000 respondents who were full-time employees working at companies with at least 3000 employees; 15% of sample aged 65+, 70% of sample aged 50-64; 15% aged under 50 with cancer risk factors. Respondents were a representative mix across gender, region, race, ethnicity.



# Galleri is *proactive*, helping detect cancer early

## Preventive

What could help **predict or prevent future cancer?**

Cancer risk factor mitigation

**Pelago**



OPTUM® | Quit For Life®

Genetic risk testing

**color**



## Proactive

**Do I have cancer today**  
and can I find it early enough to act?



**Single-cancer screenings**  
Mammography, colonoscopy,  
etc.

Early screening of a signal shared by many cancers, with a focus on **actionable next steps to diagnosis**, hasn't been possible - *until now*.

## Reactive

**I've already been diagnosed**  
with cancer. What can be done now?

Medical opinion for  
diagnosis & treatment



Memorial Sloan Kettering  
Cancer Center



Galleri does not detect a signal for all cancers and all cancers cannot be detected in the blood. False positive and false negative results do occur. The Galleri test should be used in addition to recommended screening options, such as: mammography, colonoscopy, PSA, or cervical cancer screening.



# Galleri was built on a strong network of clinical study institutions



GRAIL has and continues to conduct multiple studies with over 320,000 participants enrolled to-date as part of its clinical development program



Galleri was made commercially available in June 2021.

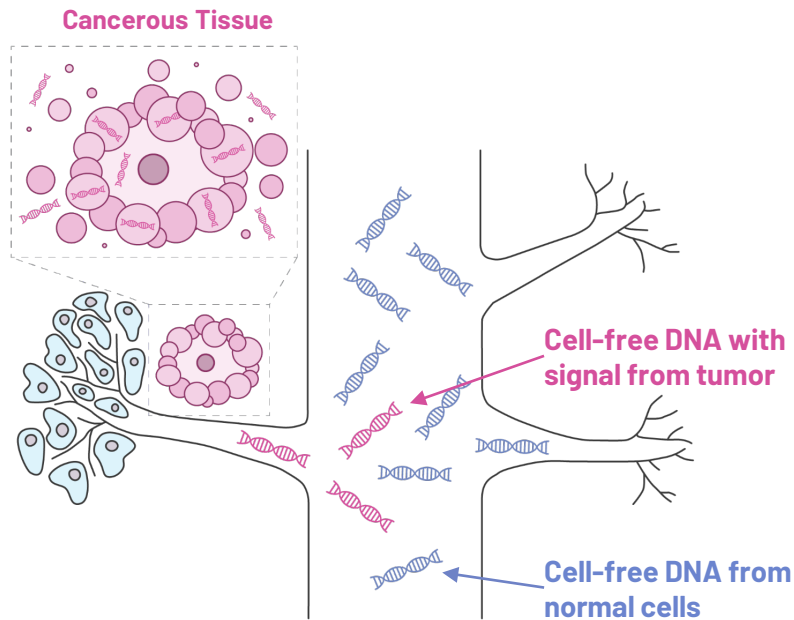
## Clinical Study Institutions



Memorial Sloan Kettering  
Cancer Alliance



# Using machine learning and AI, Galleri can detect a cancer signal in the blood and predict the signal origin (tissue/organ)



The Galleri test does not detect a signal for all cancers and not all cancers can be detected in the blood. False positive and false negative results do occur.



All cells - healthy and cancerous - release DNA into the bloodstream, but DNA from cancer cells is different from healthy cells' DNA.



Using next-generation DNA sequencing, the Galleri test is able to identify the specific methylation pattern - a natural process used to regulate gene expression - that indicate the presence of a cancer signal.



Then, using artificial intelligence and machine learning algorithms, the Galleri test predicts the tissue or organ associated with the cancer signal.



**In an analysis of employer claims,  
Galleri had the potential to detect**

**99%**

**of cancer types  
via a shared cancer signal<sup>1</sup>**

*(Data from employees aged 50-64)*

The Galleri test does not detect a signal for all cancers and all cancers cannot be detected in the blood.



# Galleri is supported by robust clinical data, helping with the #1 ranked medical fear for Americans: cancer<sup>1</sup>

## DEPENDABLE

**0.5%**

**false positive rate<sup>2</sup>**

(found in study participants without cancer)

## IMPACTFUL

**68%**  
**sensitivity**

(in cancers responsible for 2 of 3 US cancer deaths; stages I-III.<sup>3</sup> Overall test sensitivity was 51.5%)

## ACTIONABLE

**89%**  
**accuracy<sup>2</sup>**

(in predicting cancer signal origin, found in study participants with cancer)

The Galleri test does not detect a signal for all cancers. False positive and false negative results do occur.

\*The group of cancers responsible for two-thirds of annual US cancer deaths included anus, bladder, colon/rectum, esophagus, head and neck, liver/bile-duct, lung, lymphoma, ovary, pancreas, plasma cell neoplasm, and stomach.

In the Circulating Cell-free Genome Atlas sub-study (CCGA3), a prospective, case-controlled, observational study that included cancer (n=2823) and non-cancer (n=1254) participants without a history of cancer, a Cancer Signal Origin (CSO) prediction accuracy was **88.7% for cancer participants with a cancer signal detected**

1. MedicareAdvantage.com. [What Medical Condition Are You Most Afraid Of?](#) Published May 5, 2021. 2. Klein EA, Richards D, Cohn A, et al. Clinical validation of a targeted methylation-based multi-cancer early detection test using an independent validation set. Ann Oncol. 2021;32(9):1167-1177. Doi: 10.1016/j.annonc.2021.05.806. 3. Amin MB, et al (Eds). AJCC Cancer Staging Manual (8th edition). Springer International Publishing: American Joint Commission on Cancer; 2017.

# To support employee access, the Galleri experience includes the option for us to come to you

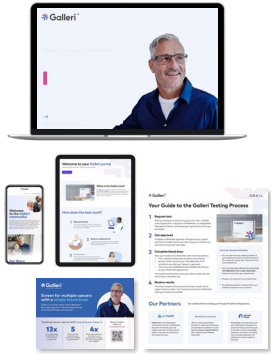


**“...We brought the blood draw directly on-site. More than half of employees took the on-site blood draw opportunity. With convenience and time being the biggest obstacles to providing care for our employees, this was a good solution...”**

– SVP, Global Total Rewards, Paramount<sup>1</sup>

# The Galleri test is part of a comprehensive and employee-oriented experience

## 1 Awareness & Education



## 2 Test Request, Order, & Blood Draw



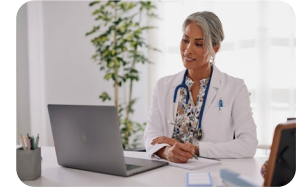
(Test is requested and then, if approved, prescribed by a healthcare professional)

## 3 Return of Results to Provider



Sample Test Reports

## 4 Support Services for "Cancer Signal Detected" Results



Based on a clinical study of people ages 50 to 79 around 1% are expected to receive a cancer signal detected result. After diagnostic evaluation, around 40% of these people are expected to have a confirmed cancer diagnosis.

Additional Ecosystem Providers Available:



# The Galleri test is being adopted by partners nationwide

## 20+ Health Systems



## 70+ Employers



## 6 Payers



Alignment Healthcare



FOUNTAIN HEALTH



## 6 Life Insurers



M Financial Group

## 10 Partners



The Galleri test does not detect a signal for all cancers and not all cancers can be detected in the blood. False positive and false negative results do occur.





# Important Safety Information

The Galleri® test is recommended for use in adults with an elevated risk for cancer, such as those aged 50 or older. The Galleri test does not detect a signal for all cancers and should be used in addition to routine cancer screening tests recommended by a healthcare provider. Galleri is intended to detect cancer signals and predict where in the body the cancer signal is located. Use of Galleri is not recommended in individuals who are pregnant, 21 years old or younger, or undergoing active cancer treatment.

Results should be interpreted by a healthcare provider in the context of medical history, clinical signs and symptoms. A test result of “No Cancer Signal Detected” does not rule out cancer. A test result of “Cancer Signal Detected” requires confirmatory diagnostic evaluation by medically established procedures (e.g. imaging) to confirm cancer.

If cancer is not confirmed with further testing, it could mean that cancer is not present or testing was insufficient to detect cancer, including due to the cancer being located in a different part of the body. False-positive (a cancer signal detected when cancer is not present) and false-negative (a cancer signal not detected when cancer is present) test results do occur. **Rx only.**

## Laboratory / Test Information

GRAIL’s clinical laboratory is certified under the Clinical Laboratory Improvement Amendments of 1988 (CLIA) and accredited by the College of American Pathologists (CAP). The Galleri test was developed, and its performance characteristics were determined by GRAIL. The Galleri test has not been cleared or approved by the Food and Drug Administration. GRAIL’s clinical laboratory is regulated under CLIA to perform high-complexity testing. The Galleri test is intended for clinical purposes.